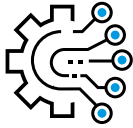


ANTARES

The industrial welding machine for mold repair

Antares is an industrial laser welder designed to **repair large workpieces**. Thanks to its articulated joints, the arm can be positioned at a variety of different angles, allowing to **direct the welding spot in difficult-to-reach areas**.



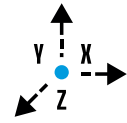
SEMI-AUTOMATIC FUNCTIONALITIES

Intuitive software equipped with semi-automatic functionalities, **easy to use even for less experienced operators**.



CONTINUOUS CYCLE

The integrated chiller, the high frequency and the high peak power make Antares suitable for continuous operation.

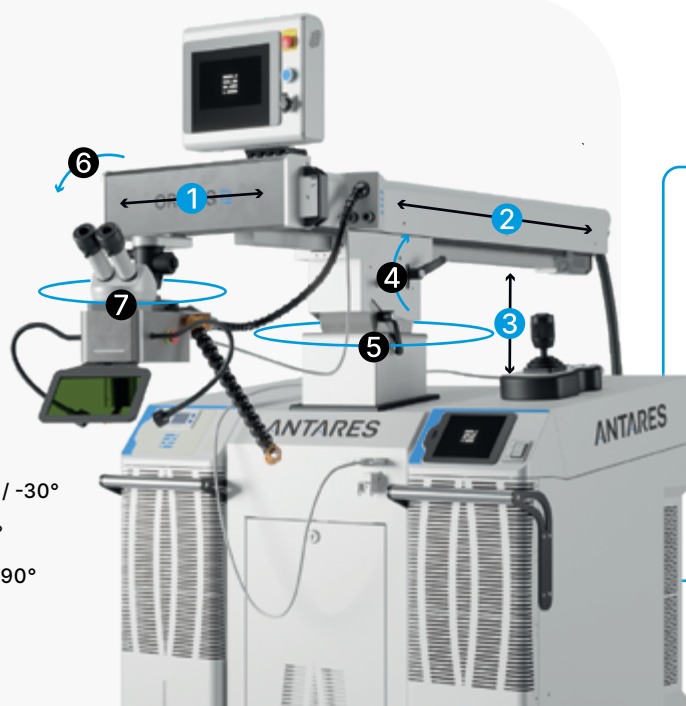


WIDE RANGE OF MOVEMENTS

Welds even in hard-to-reach areas thanks to the **X-Y-Z movement and the articulation of the welding head**.

Movements

- 1 X-Axis: 200 mm
- 2 Y-Axis: 800 mm
- 3 Z-Axis: 500 mm
- 4 Vertical inclination: +15° / -30°
- 5 Horizontal rotation: ±90°
- 6 Head support rotation: ±90°
- 7 Head movement: 360°



Discover all our machines, stay connected!



[f](#) [v](#) [@](#) [in](#)

REQUEST A QUOTE

sales@orotig.com

more information on orotig.com

FEATURES

MADE IN ITALY

Leica Microscope

Leica 45° Stereo Microscope with 10x optical zoom and aiming crosshair.

Semi-automation

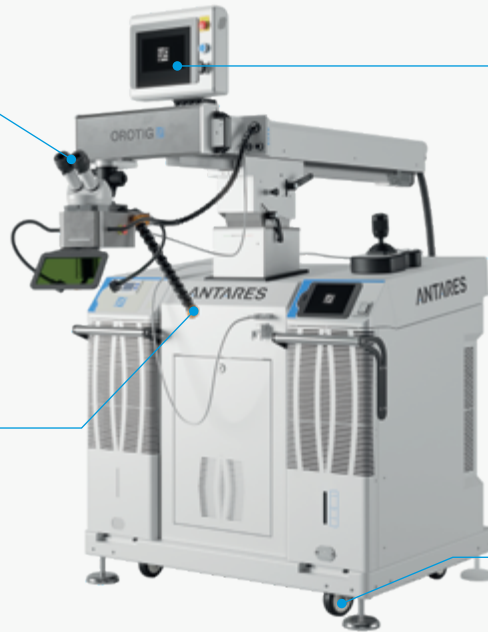
Basic software with semi-automation functionality (memorising inclined planes, setting of circumferences or straight lines etc.).

Vacuum

Exhauster and Argon fittings.

Facilitated handling

Based on wheels for movement in space, fixing feet for stability and safety.

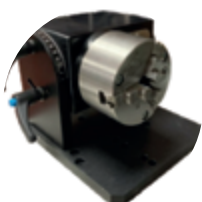


TECHNICAL DATA

Antares

CRYSTAL TYPE	Nd:YAG @ 1064 [x 2]
MAX IMPULSE ENERGY	100 J
PULSE DURATION	0.5 - 25 ms
PEAK POWER	12.5 kW
AVERAGE POWER	300 W
REPETITION FREQUENCY	0 - 40 Hz
POWER SUPPLY	400 Vac ±10%, 3P + N + PE, 50/60 Hz, 9 kW
WELDING SPOT DIAMETER	0.7 to 2 mm
COOLING TYPE	Forced air with double circuit with integrated chiller, 8 l liquid and double radiator
DIAMETER - FIBER LENGTH	1000 µm - 5 mt
DIMENSIONS (W x D x H)	1020 × 1650 × 1650 mm
WEIGHT	390 kg

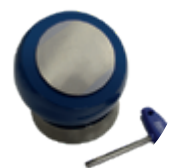
ACCESSORIES



ROTARY MOTOR WITH CHUCK (Ø 80 mm)



INTEGRATED CAMERA CONNECTED TO EXTERNAL PC



SPHERICAL MAGNETIC HOLDER