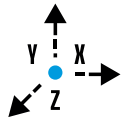


# ARIES

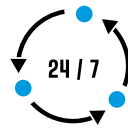
## Powerful and versatile for all types of welding

The Aries laser welding machine is designed to guarantee **high welding quality even on large workpieces**, thanks to **its open welding chamber and 3-axis height-adjustable table**.



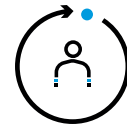
### MOVEMENT ON 3 AXES

Large table movement on X,Y,Z axes with a load capacity of up to 80 kg.



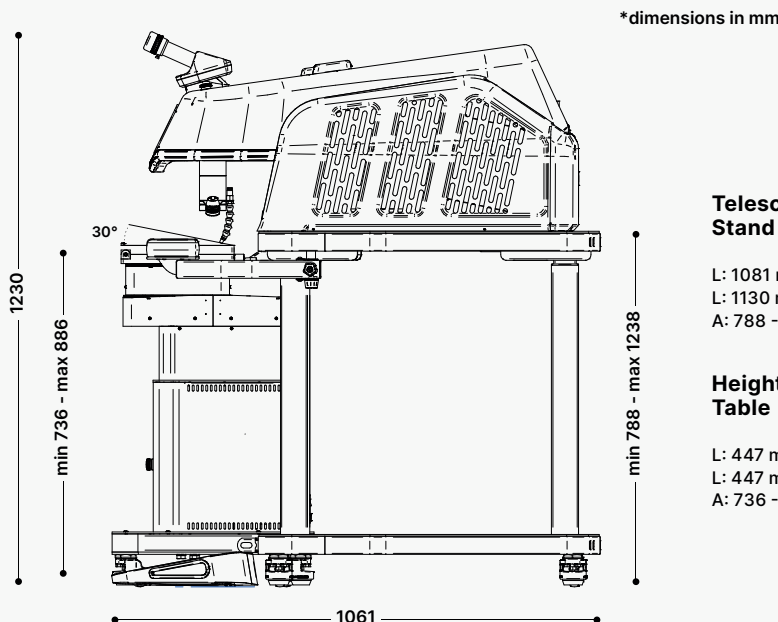
### MAXIMUM PRODUCTIVITY

**+15 hours of continuous operation** thanks to the high peak power, the enhanced cooling system, and a frequency of up to 40 Hz.



### FLEXIBILITY AND ERGONOMICS

Thanks to the telescopic stand and the solid height-adjustable support, operator can work both sitting and standing.



Discover all our machines, stay connected!



[f](#) [v](#) [@](#) [in](#)

REQUEST A QUOTE

[sales@orotig.com](mailto:sales@orotig.com)

more information on [orotig.com](http://orotig.com)

# FEATURES



MADE IN ITALY

## Leica Microscope

Leica 45° Stereo Microscope with 10x optical zoom and aiming crosshair.

## Intuitive Interface

Dynamic work program selection based on the type of work and material selected.

## Height-adjustable Table

Movable table with automatic movement on 3 axes X-Y-Z with load capacity up to 80 kg.



## Connectivity and WiFi

Telemetry for remote assistance.

## Increased Security

Double safety system with mechanical and electronic shutters for maximum protection.

## Encoder

Setting working parameters via encoder in the welding chamber.

## Telescopic Stand

Telescopic support with adjustable armrest and anchor point for joystick for working both seated and standing.

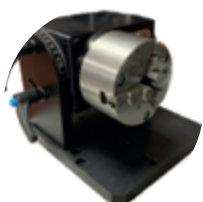
# TECHNICAL DATA

**Aries +**

**Aries<sup>2</sup>**

	Aries +	Aries <sup>2</sup>
CRYSTAL TYPE	Nd:YAG @ 1064	Nd:YAG @ 1064 [x 2]
PULSE POWER	240 J	280 J
PULSE DURATION	25 ms	25 ms
PEAK PULSE POWER	10 kW	12 kW
AVERAGE POWER	120 W	150 W
PULSE FREQUENCY	0 - 40 Hz	0 - 40 Hz
MACHINE ELECTRICAL	230 VAC ± 10%, 1P + N + PE, 50/60 Hz, 2.2 kW (Aries +) / 3.6 kW (Aries <sup>2</sup> )	
TABLE ELECTRICAL	230 VAC ± 10%, 1P + N + PE, 50/60 Hz, 1 kW	
FOCAL DIAMETER	0.1 to 2 mm	0.1 to 2 mm
COMMAND ACCESS	External with 7" capacitive touchscreen display. Internal via rotary switch	
COOLING SYSTEM	Forced air with double circuit, 8 l liquid and double radiator	
WEIGHT	250 kg (+ 55 kg height-adjustable support)	

# ACCESSORIES



**ROTARY & SPINDLE**  
(Ø 80 mm)



**INCLINED PLANE FOR POSITIONER TABLE (UP TO 30°)**



**ADJUSTABLE MICROSCOPE STAND (5° - 25°)**