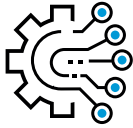


# ANTARES

## The industrial welding machine for mold repair

Antares is an industrial laser welder designed to **repair large workpieces**. Thanks to its articulated joints, the arm can be positioned at a variety of different angles, allowing to **direct the welding spot in difficult-to-reach areas**.



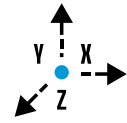
### SEMI-AUTOMATIC FUNCTIONALITIES

Intuitive software equipped with semi-automatic functionalities, **easy to use even for less experienced operators**.



### CONTINUOUS CYCLE

**The integrated chiller, the high frequency and the high peak power** make Antares suitable for continuous operation.

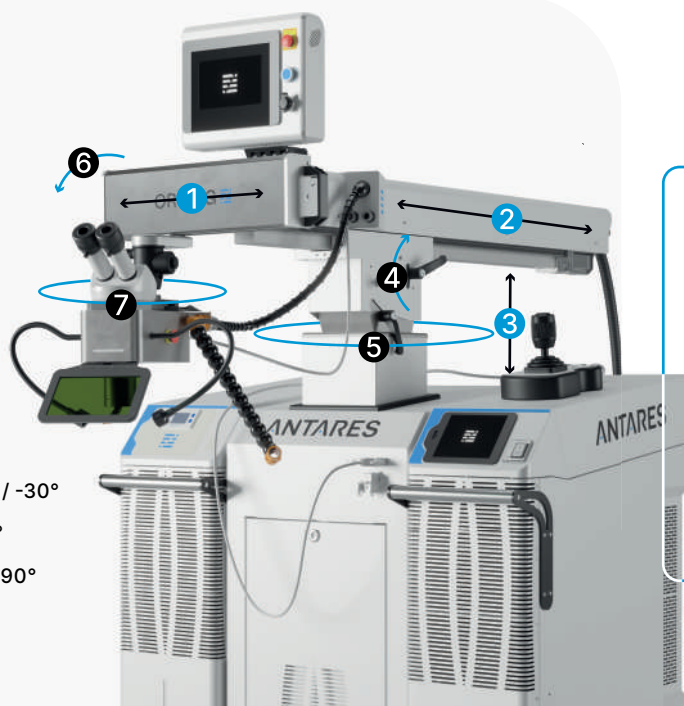


### WIDE RANGE OF MOVEMENTS

Welds even in hard-to-reach areas thanks to the **X-Y-Z movement and the articulation of the welding head**.

### Movements

- 1 X-Axis: 200 mm
- 2 Y-Axis: 800 mm
- 3 Z-Axis: 500 mm
- 4 Vertical inclination: +15° / -30°
- 5 Horizontal rotation: ±90°
- 6 Head support rotation: ±90°
- 7 Head movement: 360°



**Discover all our machines, stay connected!**



REQUEST A QUOTE

[sales@orotig.com](mailto:sales@orotig.com)

more information on [orotig.com](http://orotig.com)

# FEATURES

MADE IN ITALY

## Leica Microscope

Leica 45° Stereo Microscope with 10x optical zoom and aiming crosshair.

## Semi-automation

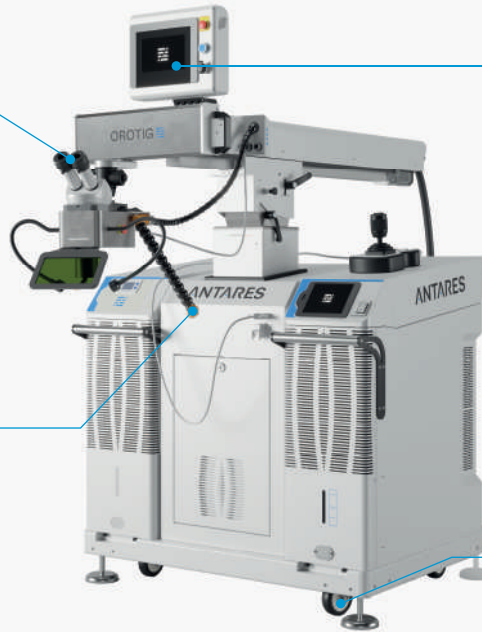
Basic software with semi-automation functionality (memorising inclined planes, setting of circumferences or straight lines etc.).

## Vacuum

Exhauster and Argon fittings.

## Facilitated handling

Based on wheels for movement in space, fixing feet for stability and safety.

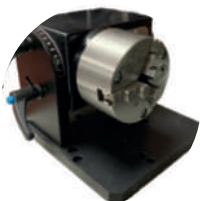


# TECHNICAL DATA

Antares

|                         |  |
|-------------------------|--|
| CRYSTAL TYPE            | Nd:YAG @ 1064 [x 2]  |
| MAX IMPULSE ENERGY      | 100 J  |
| PULSE DURATION          | 0.5 - 25 ms  |
| PEAK POWER              | 12.5 kW  |
| AVERAGE POWER           | 300 W  |
| REPETITION FREQUENCY    | 0 - 40 Hz  |
| POWER SUPPLY            | 400 Vac ±10%, 3P + N + PE, 50/60 Hz, 9 kW  |
| WELDING SPOT DIAMETER   | 0.7 to 2 mm  |
| COOLING TYPE            | Forced air with double circuit with integrated chiller, 8 L liquid and double radiator |
| DIAMETER - FIBER LENGTH | 1000 µm - 5 mt   |
| DIMENSIONS (L x P x H)  | 1020 × 1650 × 1650 mm  |
| WEIGHT                  | 390 Kg   |

# ACCESSORIES



ROTARY MOTOR WITH CHUCK (Ø 80mm)



INTEGRATED CAMERA CONNECTED TO EXTERNAL PC



SPHERICAL MAGNETIC HOLDER